

Ruta de la Plata

Expansion Module 1: Benavente – Barcial del Barco

Technical Features of Benavente – Barcial del Barco



This expansion module represents the route between the stations of **Benavente** (from the Sugar process factory of Esla) and **Barcial del Barco**, a small village located 8 km from Benavente. The Layout presents a very soft profile, since the greater part of the same runs along the Valley of Esla River. So there are only ramps for consideration in the rise from Esla Valley to **Barcial del Barco**, with ramps of 10 and 14 thousandths. The landscape is very similar to the existing in the rest of the route, presenting a sharp contrast

between the green Esla Valley area and the rain-fed predominant once went up to **Barcial del Barco**. At present, and by the ideal of the route (almost straight from **Barcial** until **Benavente**), the old track serves as a more immediately way for those who goes on foot or bicycle between these two locations.

Expansion Modules Project for Astorga - Benavente

With the aim of expanding the Trainz experience along the route “Ruta de la Plata”, we bring the intention to carry out a continuation of the route, which since its publication last year, covers 60 kilometers between the towns of **Astorga** and **Benavente**. Given that most of the projects of big Trainz routes fade off after some time, we believe that the most effective way to expand the route is to offer a series of expansion modules that will add new stations when trying to complete the track between

Benavente and **Zamora**. We think that this method will guarantee that at least all the work done is available for enjoyment, not yet reaching completion of the layout until **Zamora**.



Features of the Module in Trainz

- Real buildings and structures.
- Real layout profile
- Texturisation of terrain with ortho-photos
- Real track layouts in station
- Interactive industries
- Mechanical Signalling
- Real sped limits
- Distance Between stations (Benavente – Barcial del Barco): 8 km.

Software Requirements

The requirements are the same as required for the full route, which does not vary virtually any aspect. In spite of any new objects, the time of load remains the same. Here are the characteristics of equipment in which the route was made, obtaining always a very acceptable performance

- Quad 6600 Processor
- 4 GB RAM (3,25 gigas detected by Windows VISTA)
- GF 8600 GT 512 mb Graphic Card
- Windows Vista Home Premium 32 bits



Stations

Barcial del Barco



The station of **Barcial del Barco** is located in the km 278 of the line Palazuelo - Astorga. It is one of those few stations that are located inside the village, so the passengers service was much more effective than in the majority of stations. The transfer of goods was probably more intense than the passengers, thanks to the large amount of farmland in the area and the good existing communication by both road and rail (only a few streets between the station of the national road). From the year 82, this movement is growing even more with the installation of the SEMPA silo (very similar to

the one existing in Astorga Oeste), so it is necessary to install a third track in addition to other that allows not to invade the main track during the shunting in the silo.

During his last days of life, with the gradual reduction of agricultural tasks, the inactivity of the Silo and the decreasing services in the route, two of the three tracks of the station were removed, leaving only the main track and the track to the silo, relegating the station to the sad category of loading dependence, since the passenger services where removed some years before.

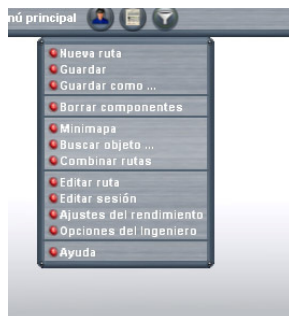
At present **Barcial del Barco** still retains the mechanical signalling, through Renfe Home Semaphores and Distant disk Signals. It was one of the very few stations of the route that kept mechanical signalling until his last days, so this is the system that we have implemented in the virtual version of the station.





(Foto real de www.afzamorana.es)

Conexión between Route and Module



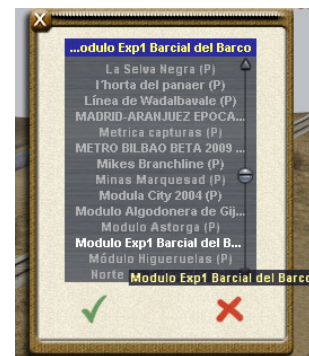
For those who are accustomed to the connection of modules and routes, the process is very easy. However, there will be some people for whom this is the first time they are preparing to join two routes. We will try to explain the operation in the easiest way, as well as fixing any defects that appear after the connection of the same.

The first thing we have to do is, obviously, install the module with all of its dependencies.

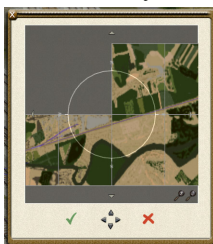
Once we have it, we must load the route **Astorga – Benavente with its default**

session. Then we go to the surveyor menu, and select the option to merge routes.

From the list we select “**Módulo Exp1 Barcial del Barco**”. Click on the green “tick” to confirm this step.



Automatically Trainz moves the camera to the origin point of the route, which in this case is the entry of Astorga Oeste. However, minimap should be located just on the point where the two routes are connected, as the left image shows. As noted, the expansion module appears already located in the correct position, without having to use the arrows of movement.



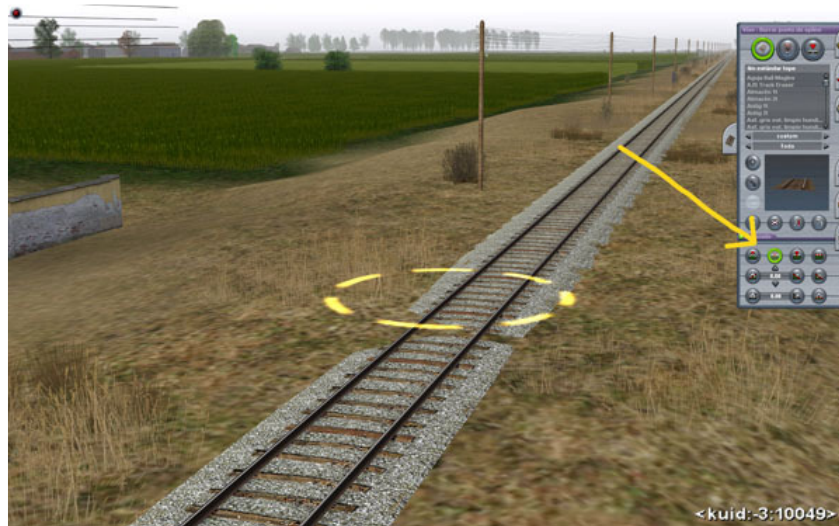
At this point we already have the module in its correct place, but we must connect the tracks and some splines.

We set the camera in the place where the route used to end. The first thing we have to do is delete the **portal**, since we don't need it anymore.



Now we should be seeing the two tracks separated by just some meters. We connect them (**dragging the module track, not the one connected to the portal**) and then we use the **straighten track tool** to fix the curve that will appear in the track going to Barcial.

Even with this operations, we will see that the track still drags a very short mad curve between the two vertex that remains in place. We have to delete the second vertex going to Barcial to fix this problem, leaving the track as shown in the image below. Marked with an arrow is the **delete vertex tool**, for those who don't know where it is located.



Following this operation, it could happen that part of the track behind us will appear "buried" in the field, as the deleted vertex will change the slope slightly:



Now is up to us to leave the track in this way, or try to fix the terrain with the terrain Tools of Surveyor. I also suggest to close the wall of the Sugar Process Factory, because the new connection with the module will leave an open side just to the **Barcial** side

It is very likely that has the merge has produced some creases in the terrain , especially in the edges of the grid. We should also fix this using the terrain tools.

A final step that is quite necessary is to correct the height of the passengers of the AJS station in **Barcial del Barco**, because by default they will appear floating above the platform. We click the question mark button and we click on the AJS track. Open the Station Options tab and set the height to 0.5 meters. We should also set up the station with a realistic passenger generation. The starting number should be of 5 to 8, and the frequency of 1 passenger/hour.

Sadly, other installations as the Silo Interactive Track will appear empty, since it seems that there's no way to merge a route with its default session (in which I have everything configured). For those who want to setup it themselves, the Silo has a maximum capacity of 15.000 tons.



Now we should save the route using a **different name**.

Kuids

The kuids are virtually the same used by the route Astorga – Benavente. You will need some new of my authorship that you can find in the download section of STR with the name of **Pack de Objetos Barcial del Barco**. There are some new herbs of Jankvis, which may be downloaded from the DLS, as well as several objects from FMA hosted in our web site.

Acknowledgment

As always, thanks to my STR partners for the release of this module. Thanks to them and to his hard work one always feels with encouragement to resume old projects in Trainz, despite the long periods away from the game. I want to thank the support that brings all the people that followed the process in our forum. Thank you very much.

